



No Time to Die



JENNA DEPELLEGRINI, NICOLE DUBROW, ISABEL MARTINEZ, JOHN PERRY-MILLER, SKYLAR SMITH

No Time to Die

RED CARPET OVERVIEW



RECRUITED TO RESCUE A KIDNAPPED SCIENTIST, GLOBE-TROTTING SPY JAMES BOND FINDS HIMSELF HOT ON THE TRAIL OF A MYSTERIOUS VILLAIN, WHO'S ARMED WITH A DANGEROUS NEW TECHNOLOGY.

RELEASE INFORMATION:

- WHO: UNIVERSAL PICTURES
- WHEN: FRIDAY, OCTOBER 8, 2021 (UNITED STATES)
- WHERE: WORLDWIDE

MOVIE PREMIERE INFORMATION:

- WHEN: FRIDAY, OCTOBER 2021
 - 4 P.M.: GOLD CARPET
 - 5 P.M.: FILM VIEWING
 - 8 P.M.: RECEPTION
- WHERE: SABAN THEATRE, LOS ANGELES, CA
- WHO: 150 GUESTS TOTAL

No Time to Die

VIP GUEST LIST



DANIEL CRAIG
"JAMES BOND"



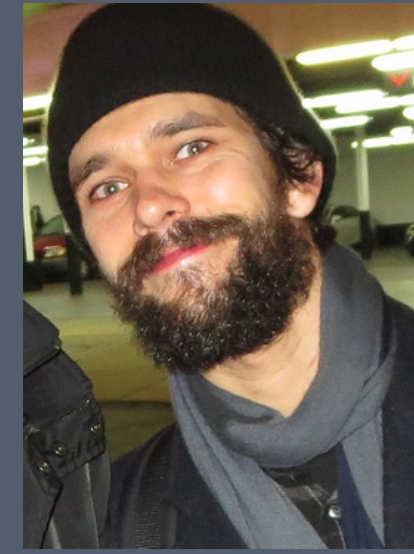
RAMI MALEK
"SAFIN"



LÉA SEYDOUX
"DR. MADELEINE
SWANN"



LASHANA LYNCH
"NOMI"



BEN WHISHAW
"Q"



RALPH FIENNIES
"M"



ANA DE ARMAS
"PALOMA"



NAOMIE HARRIS
"EVE MONEYPENNY"



BILLY MAGNUSSEN
"LOGAN ASH"



JEFFERY WRIGHT
"FLEIX LEITER"

No Time to Die

SPECIAL GUEST LIST



SCREENWRITERS: NEAL
PURVIS AND ROBERT WADE



DIRECTOR: CARY JOJI
FUKUNAGA



BILLIE EILISH



BARBARA BROCOLI



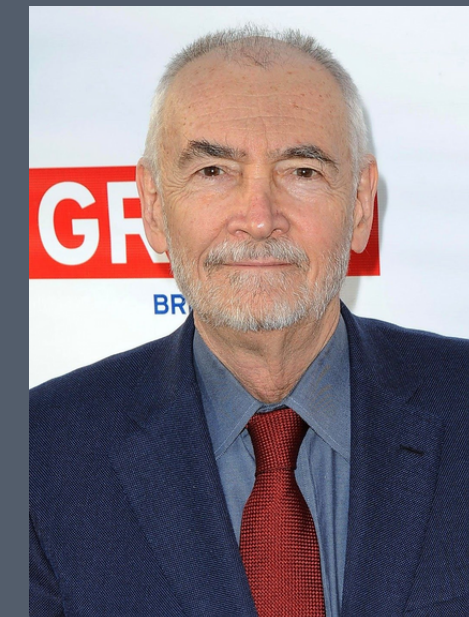
JUDI DENCH



DAME SHIRLEY BASSEY



NANCY SINATRA



MICHAEL G. WILSON

No Time to Die

INVITATION



No Time to Die

DÉCOR



THE THEME OF THE EVENT WILL BE FORMAL, BLACK TIE TO GO WITH THE EVENT COLORS OF DARK NAVY BLUE, SLATE GRAY, PALE WHITE, AND LIGHT GOLD. JAMES BOND IS A CLASSY AGENT AND THIS EVENT WILL SHOWCASE THIS WITH A MORE OLD HOLLYWOOD, 1920S GLAMOUR. GUESTS WILL BE REQUIRED TO WEAR FORMAL WEAR. THE RECEPTION STYLE IS A COCKTAIL RECEPTION AND WILL TAKE PLACE IN THE GALLERY ABOVE THE THEATER SPACE. THE GALLERY CAN HOLD UP TO 500 GUESTS.

No Time to Die

DÉCOR

AUDIO, MICS, AND LIGHTING (PRODUCTION EXPRESS INC.)

- LIGHTING

- ETC SOURCE 4 FIXTURE (4 UNITS) \$15.00/ UNIT (\$60)
- ETC SOUCE 4 LENS TUBE (4 UNITS) \$5.00/UNIT (\$20)
- MAC 101 LED (2 UNITS) \$65/UNIT (\$130)
- LIGHTRONICS TL4008-16 CHANNEL (\$40)
- STAGE PIN CABLE 5' (20 UNITS) \$3/UNIT (\$60)
- STAGE PIN CABLE 10' (20 UNITS) \$4/UNIT (\$80)
- APUTURE LIGHT DOME
- MEDIA LIGHT KIT: KINO FLO LIGHT (3 UNITS) \$85/UNIT (\$255)
- \$36/UNIT (\$540)

- DIMMING

- LEPRECON 48X2.4K TOURING RACK (\$500)

- AUDIO

- SHURE SM58 WIRED MICROPHONES (10 UNITS) \$15/UNIT (\$150)
- SHURE PGX W/WL93 WIRELESS MICROPHONES (10 UNITS) \$78/UNIT (\$780)
- MICROPHONE STANDS (10 UNITS) \$4.50/UNIT (\$45)
- OGALAXY HOT SPOT SPEAKER (3 UNITS) \$17.50/UNIT (\$52.50)
- AUDIO MIXER (1 UNIT) \$5.00
- SUBPACK (2 UNITS) (\$598)
- SUBWOOFER (2 UNITS) (\$258)
- LUMEN PROJECTOR (\$299)
- PAGINIG AMPS (4 UNITS) \$85/UNIT (\$340)

- CROWD CONTROL

- STANCHIONS (SILVER) (15 UNITS) \$48/UNIT (\$720)
- VELVET ROPES (15 UNITS)

No Time to Die

DÉCOR

BAR (12' BROWN PADDED BAR WITH MATCHING WOOD SHELF)

- TABLE CANDLES (WHITE WITH GOLD TRIM) (30 UNITS) \$75/ 12 CANDLES (\$225)
- BAR DECORATION
- CANDLES (WHITE WITH GOLD TRIM) (24 UNITS) \$75/ 12 CANDLES (\$150)
- FLOWERS (NUVOLA TUSCANA) (3 UNITS) \$250 EACH (\$750)
- DUBLIN 3-TIER SERVER (4 UNITS) \$84 EACH (\$336)
- SIGNATURE DRINK SIGNAGE (3 UNITS) \$85 EACH (\$255)
- CUSTOM COCKTAIL NAPKINS (DARK BLUE) (500 UNITS) \$36.95/50 NAPKINS (\$369.50)
- DRINK STIRRERS (500 UNITS) \$310 PER 500 UNITS (\$310)
- UNDER BAR LIGHTING (2 UNITS) \$28 EACH (\$56)

COCKTAIL TABLES (HIGH TOP TABLES)

- TABLE LAMPS (30 UNITS) \$30 PER UNIT (\$900)
- TABLE CENTERPIECES
- LIM PILLAR CANDLES AND CYLINDER VASES (30 UNITS) \$75/SET OF 12 (\$225)
- VINTAGE ETCHED MARTINI GLASS DECORATION (30 UNITS) \$59.95/ SET OF 4 (\$479.60)
- TABLE CLOTH DARK BLUE) (30 UNITS) \$295.99/48 TABLE CLOTHS (\$295.99)

AISLE RUNNER IN GOLD (\$52.49)

STEP AND REPEAT 10X8 "QUICK SETUP" (\$420)

No Time to Die

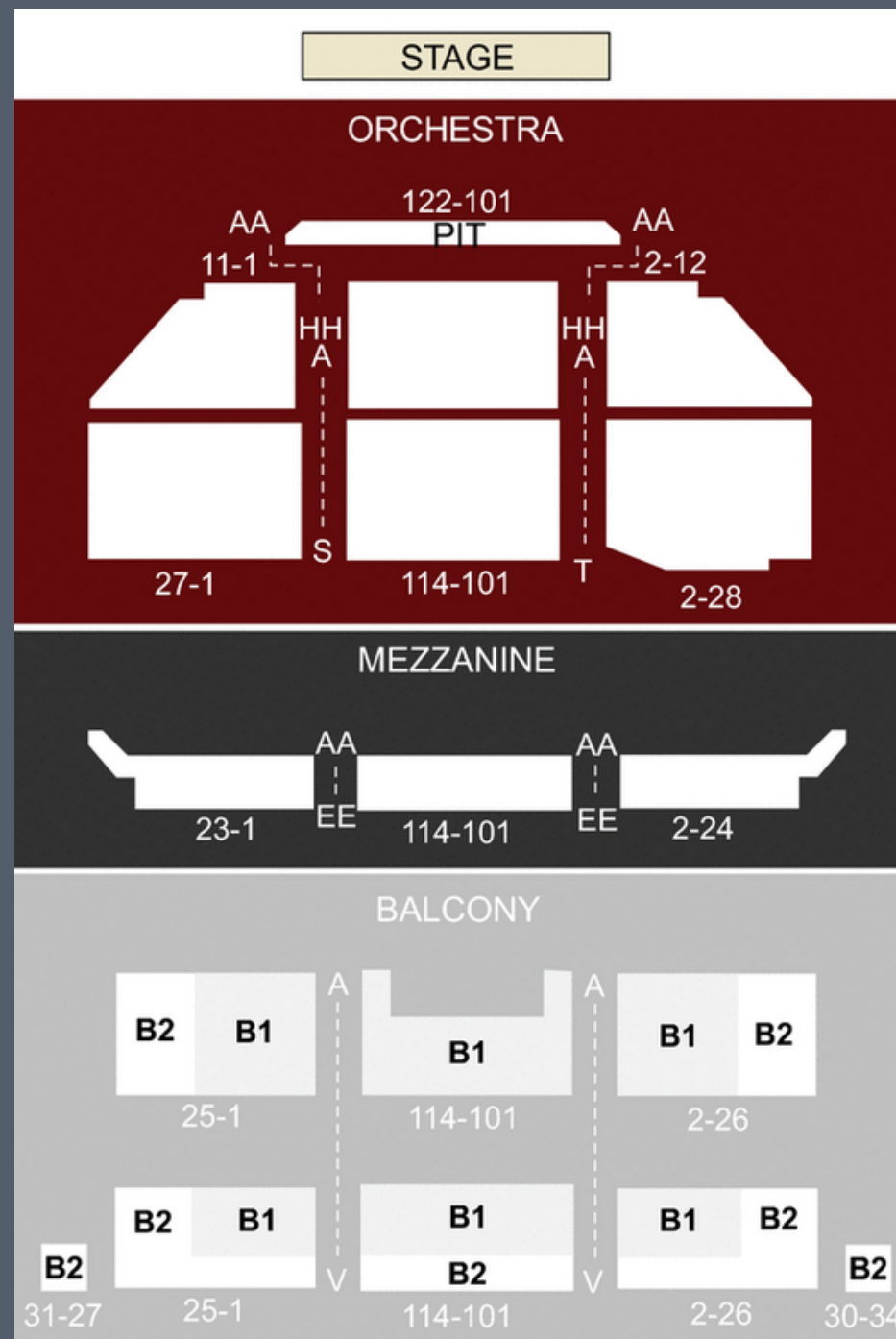
DÉCOR

- ULVERSTON 65" CANDELABRA FLOOR LAMP:
\$649.99/ LAMP (5 UNITS) (\$3,249.95)
- JERICHO WOOD TRIM LEATHER SOFA FURNITURE OF
AMERICA CM6786-SF \$3,299.00/COUCH (2
UNITS) (\$6,598)



No Time to Die

FLOOR PLANS

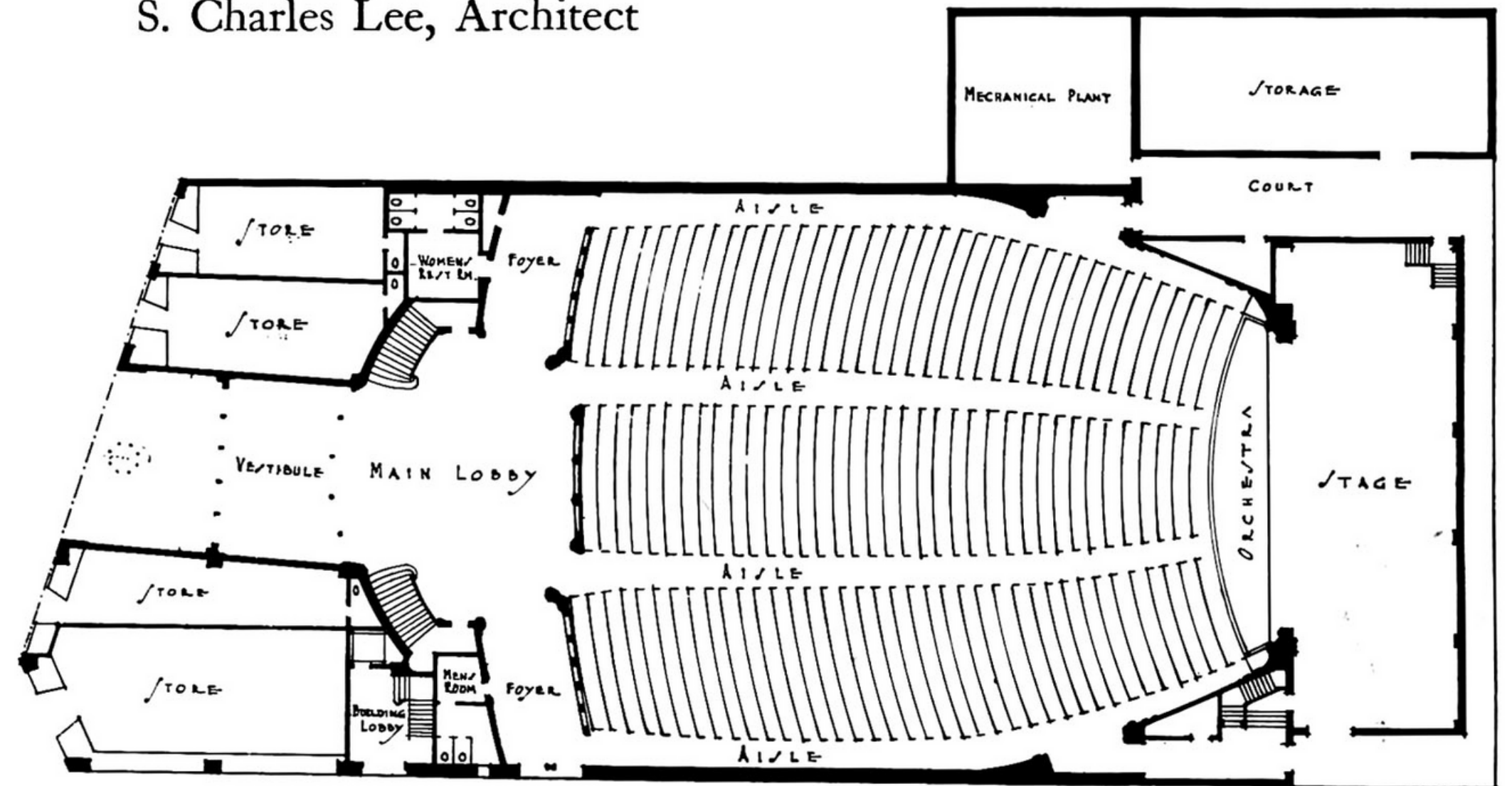


Theatre Plans

S. Charles Lee, Architect

PLAN B

GROUND FLOOR PLAN, FOX
WILSHIRE THEATRE, BEV-
ERLY HILLS, CALIFORNIA



No Time to Die

DÉCOR

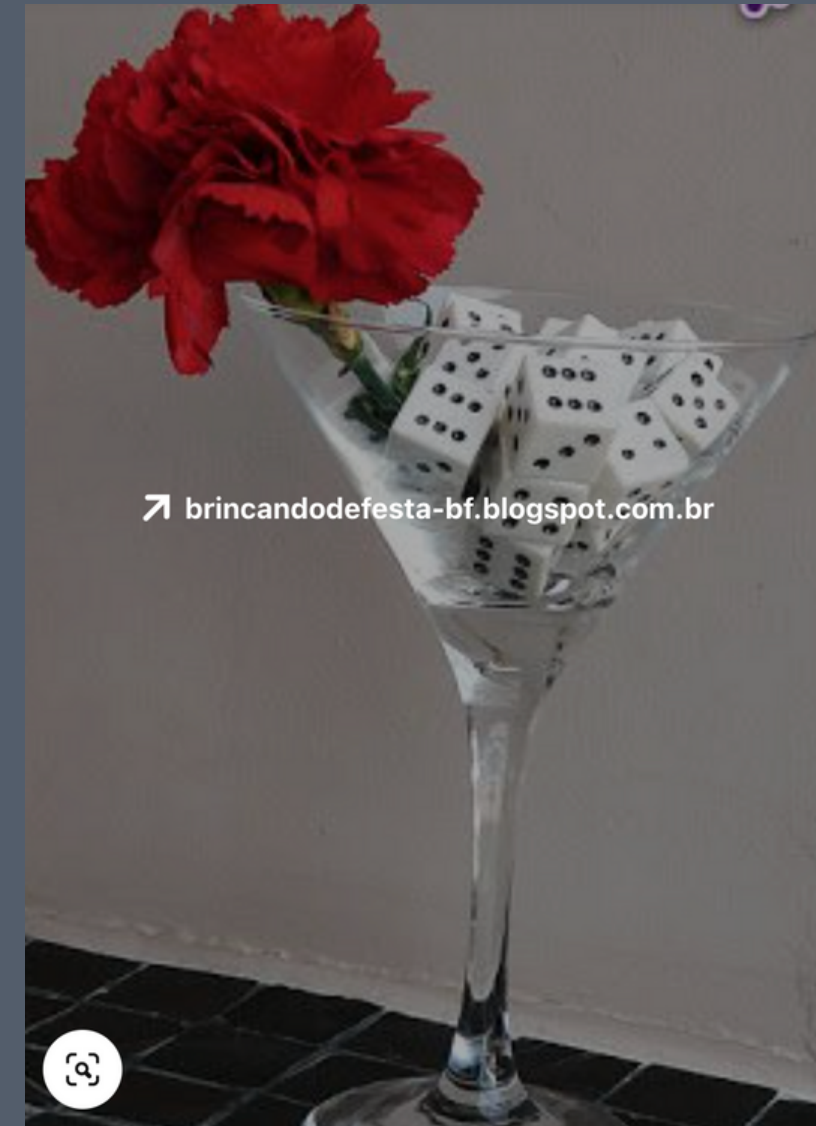


No Time to Die



No Time to Die

DÉCOR



➤ brincandodefesta-bf.blogspot.com.br

No Time to Die

DÉCOR



No Time to Die

BRANDING ON DECOR



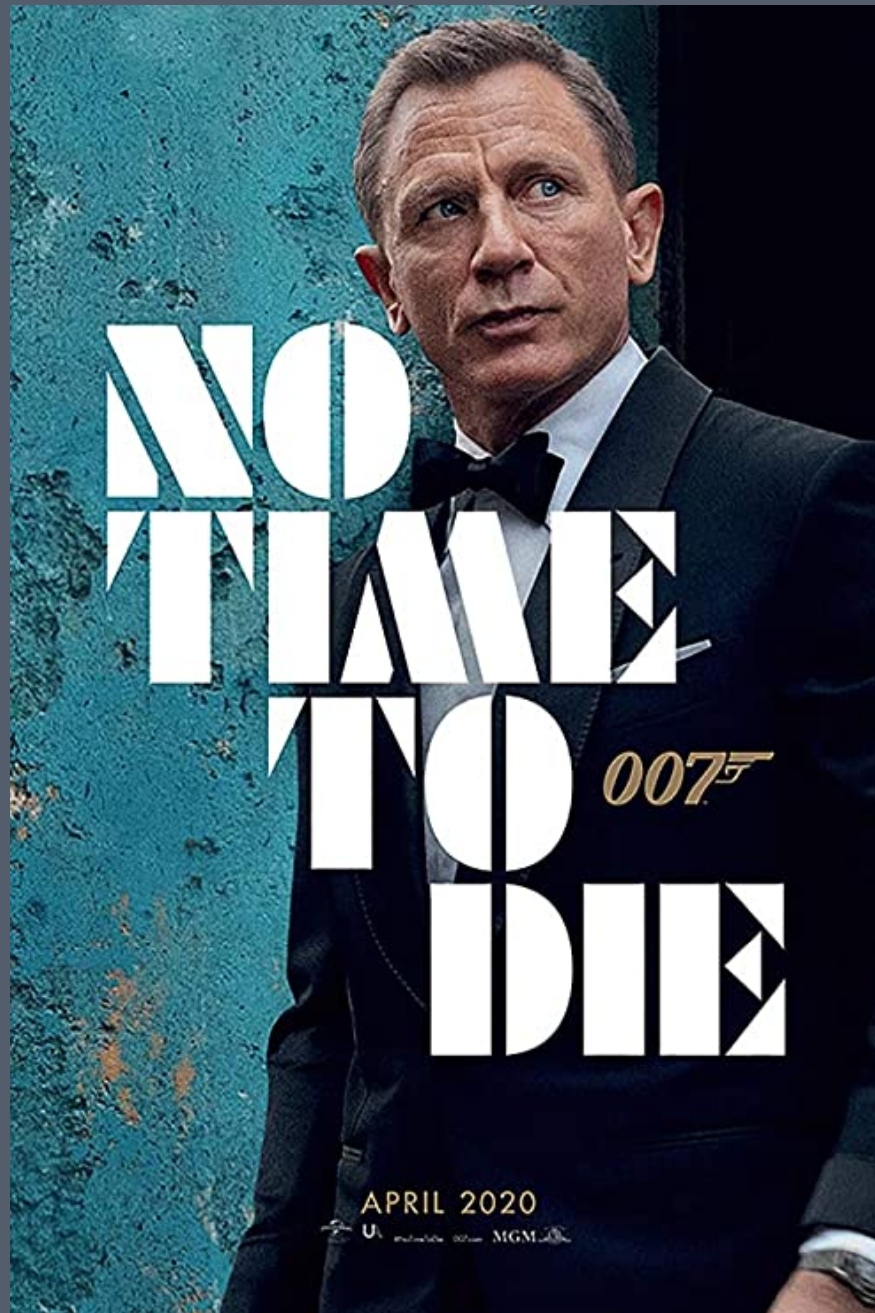
No Time to Die

SECURITY & VALET PARKING



No Time to Die

MOVIE POSTERS

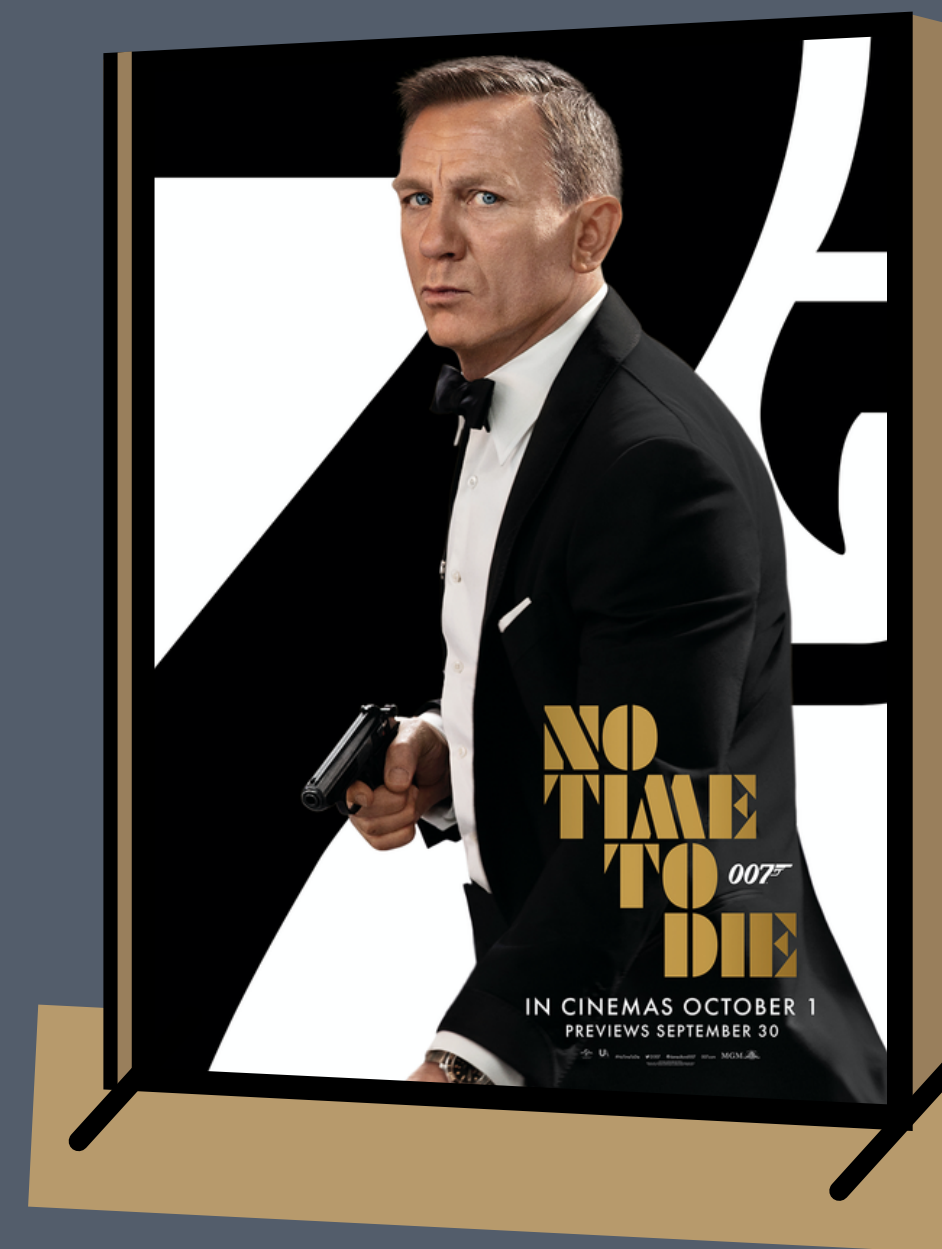


No Time to Die

RED CARPET SIGNAGE



STEP AND REPEAT



LARGE MOVIE POSTER BOARD
+ GOLD CARPET

No Time to Die

ENTRANCE + RED CARPET SIGNAGE



No Time to Die

MENU

MENU

007[™]

HORS D'OEUVRES

DEVILED EGGS WITH PAPRIKA AND FRESH CHIVES

POTATO BLINI, SMOKED SALMON & CAVIAR

GORGANZOLA MASHED POTATO MARTINI TOPPED
WITH A GRILLED BABY LAMB CHOP

GRILLED MARINATED VEGETABLE TRAY

MINI BEEF WELLINGTONS WITH BEARNAISE SAUCE

STATIONS

CHICKEN STATION

WITH YOUR CHOICE OF ZUCCHINI LIME CHARDONNAY
CHICKEN, CHICKEN VERONIQUE OR TOFU PICATTA.
SERVED WITH RICE, FRESH VEGETABLES AND CHEESE
ROLLS

PASTA STATION

WITH YOUR CHOICE OF VEGETARIAN ROTOLO BOLZANO,
PELLE ALLA CHECCA OR CHICKEN RIGATONI. SERVED
WITH FRESH VEGETABLES, CAESAR SALAD, AND
ROSEMARY FOCACCIA

CARVING STATION

WITH YOUR CHOICE OF CABERNET BRAISED SHORT
RIBS, TRI-TIP OR BULOGI BEEF. SERVED WITH GARLIC
MASH POTATOES, FRESH VEGETABLES AND CHEESE
ROLLS

SLIDER STATION

WITH YOUR CHOICE OF CLASSIC BEEF SLIDER, SMOKED
BRISKET SLIDER, OR GRILLED VEGETABLE SLIDERS.
SERVED WITH HAND-CUT FRIES

POKE STATION

WITH YOUR CHOICE OF FAROE ISLAND SALMON OR
GULF ROCK SHRIMP. SERVED WITH RICE AND AN
ASSORTMENT OF SAUCES & TOPPINGS.

MENU

007[™]

DESSERT

SWEET TREAT TRAY

AN ASSORTMENT OF FRUIT TARTS, VANILLA BEAN
CHOCOLATE ECLAIRS, DARK CHOCOLATE
GANACHE BROWNIES, BUTTERSCOTCH BLONDIES &
OREO CHEESECAKE SQUARES.

COCKTAILS

SHAKEN, NOT STIRRED

A MARTINI WITH VODKA, DRY VERMOUTH, AND OLIVES

THE VESPER

A MARTINI INCLUDING GORDON'S GIN, VODKA, KINA
LILLET, AND A LEMON PEEL FOR GARNISH

YOU ONLY DRINK TWICE

AN AMERICANO WITH CAMPARI, SWEET VERMOUTH,
PERRIER AND AN ORANGE TWISTT FOR GARNISH

No Time to Die

RECEPTION SIGNAGE



LOCATION SIGNAGE



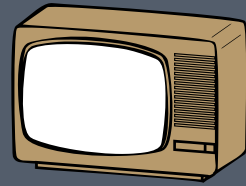
BUFFET LABEL CARDS



MENU BOARDS (BAR + STATIONS)

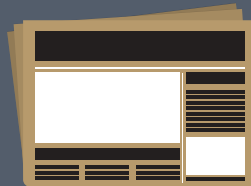
No Time to Die

RED CARPET DETAILS: MEDIA LIST



Broadcast

ABC
Access-Hollywood
CBS Los Angeles
E!
Entertainment Tonight
Extra TV
FOX
LA Weekly
NBC
NBC Universal
Viacom CBS UK



Print

American Cinematographer
Backstage
Billboard
Box Office Magazine
Entertainment Weekly
Esquire
Forbes
GQ US & UK
In Touch Weekly
LA Times
Men's Health
Men's Journal
Moviemaker Magazine
NY Times
OK!
People Magazine
Star
The Hollywood Reporter

TV Guide
US Weekly
Vanity Fair
Variety
Vogue
Wall Street Journal
Washington Post



Online

Associated Press
Billboard
Business Insider
Buzzfeed
Deadline
E! Online
Entertainment Weekly
Esquire
Forbes
GQ
Hollywood Insider
Hollywood Reporter
Huffington Post
IMDB
INSIDER
Instyle
Los Angeles Magazine

Men's Health
Men's Journal
Movie Guide
New Yorker
OK Magazine
People
Refinery 29
Reuters
Rolling Stone
The Guardian
US Weekly
USA Today
Vulture
Variety
Wall Street Journal
Washington Post

No Time to Die

RED CARPET DETAILS: MEDIA LIST

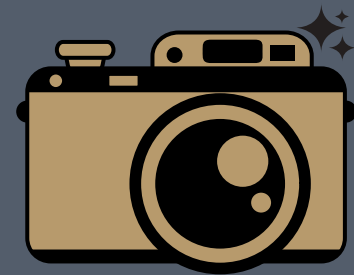
Photography

Getty

People

Shuttershock

TMZ



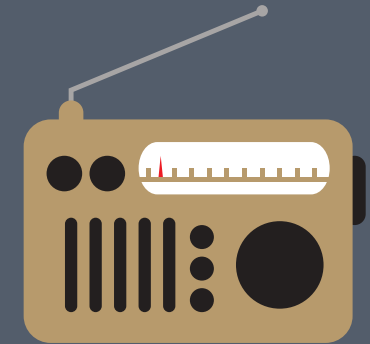
Radio

BBC Radio London

Film Daily Podcast

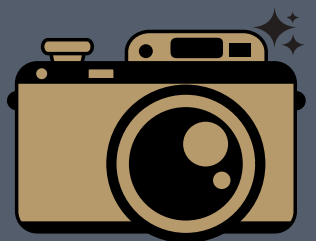
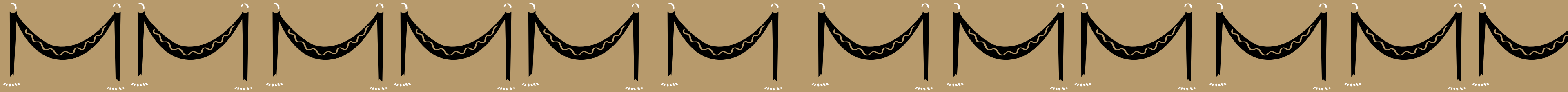
KIIS FM 89.3

NPR Movie Reviews

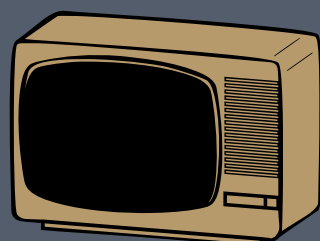


No Time to Die

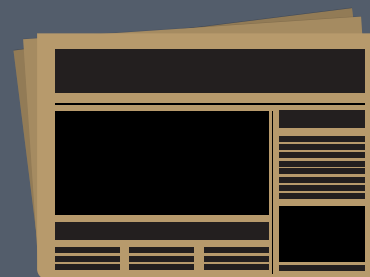
RED CARPET DETAILS: FLOOR PLAN



Photography



Broadcast



Print



Online



Radio

No Time to Die

RED CARPET DETAILS: FLOOR PLAN WITH ESSENTIAL OUTLETS



Getty
People
Shuttershock
TMZ

ABC
Access-Hollywood
CBS Los Angeles
E!
Entertainment Tonight
Extra TV
FOX
LA Weekly
NBC Universal

Entertainment Weekly
Esquire
GQ US
LA Times
Men's Health
Men's Journal
NY Times
The Hollywood Reporter
Vanity Fair
Variety
Vogue
Wall Street Journal
Washington Post

Associated Press
E! Online
Forbes
Hollywood Insider
Huffington Post
INSIDER
Los Angeles Magazine
New Yorker
Rolling Stone
The Guardian
US Weekly
USA Today

Film Daily Podcast
KIIS FM 89.3
NPR Movie Reviews

No Time to Die

PRESS MATERIALS

Hard copies of:

- Press Release
- Contact List
- Company List with Correct Spelling of Names
- Run of Show Schedule

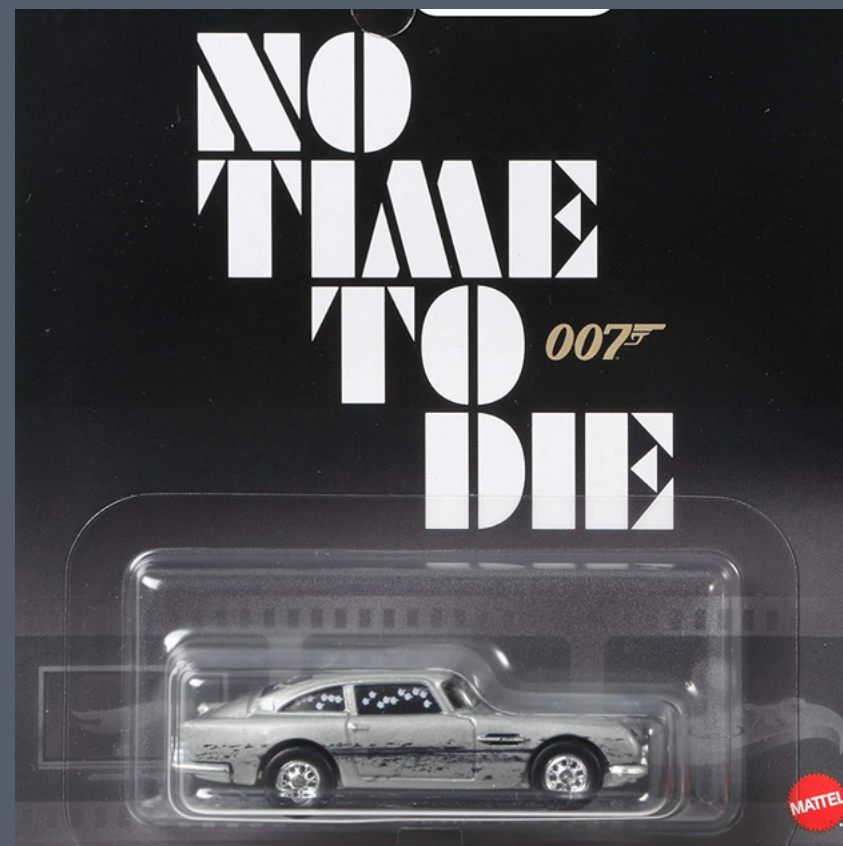
Customized Flashdrive of:

- Sound bites
- Movie Premiere Information and Stills
- Behind the Scenes clips and information
- Run of Show Schedule



No Time to Die

BLACK GIFT BAGS WITH GOLD TISSUE INCLUDES:



- Flash Drive with logo containing digital copies of hard copy materials, correct movie logo, and stills from the film
- Miniature Bombay Sapphire gin bottles
- Cocktail Shakers with logo
- Toy Aston Martin
- Three cocktail recipe cards: The Vesper, You Only Drink Twice, and License to Kill



No Time to Die

TRAVEL



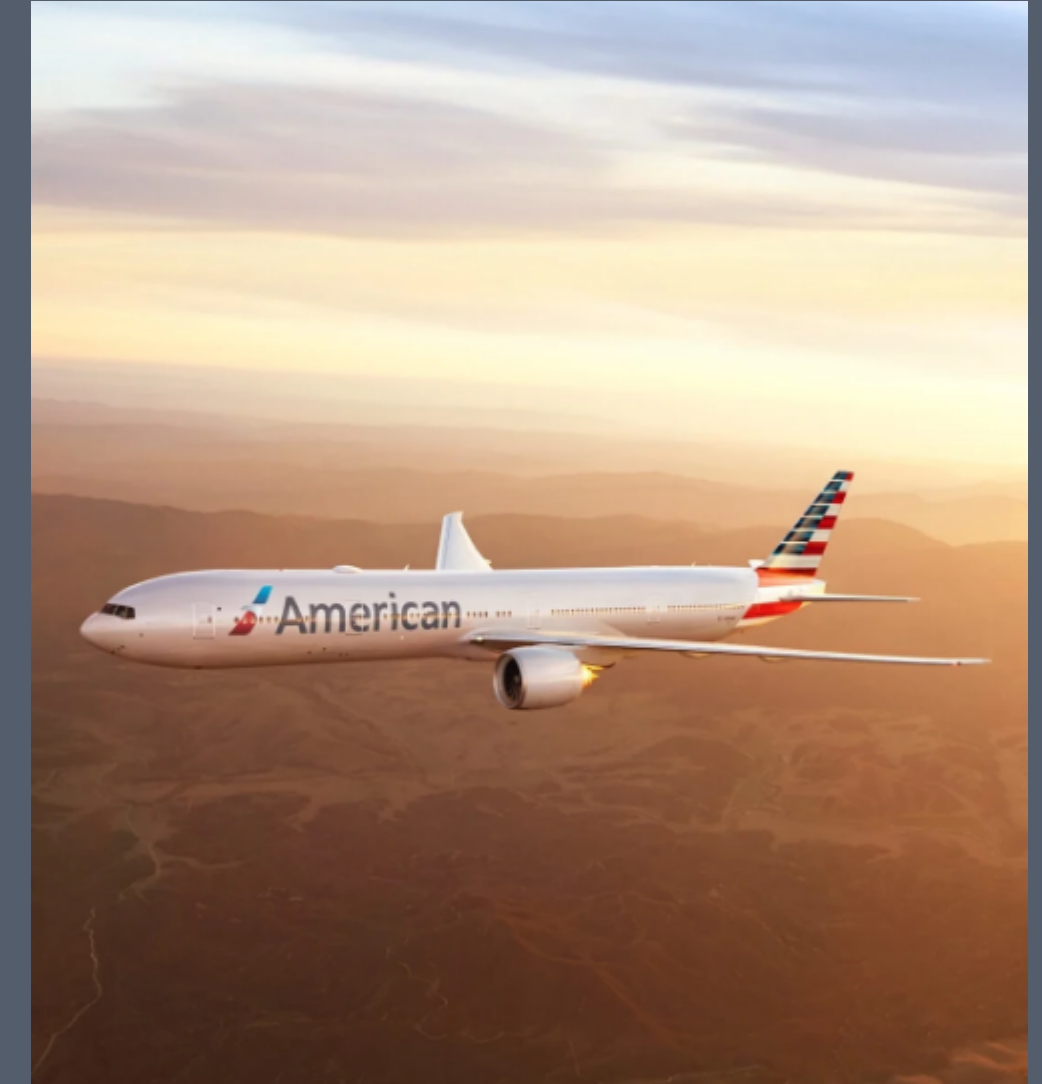
The Sunset Tower
13 rooms for staff and company



The Beverly Hills Hotel
17 rooms for talent and execs.



Car Service
23 cars for 6 hours each



Round Trip Flights
American Airlines 30 First Class tickets

No Time to Die

TOTAL COST

\$762,006.51